

Melt Pressure Transmitter

PT110FB&PT120FB&PT130FB Series Explosion-Proof



Characteristic

- * Signal output:4~20mA,4~20mA+Hart protocol
- * Intrinsically safe type: Exia II CT4 Ga
- * Accuracy grade:0.5%F.S
- * Special diaphragm coating
- * Special electronic design, super strong anti-interference

Description

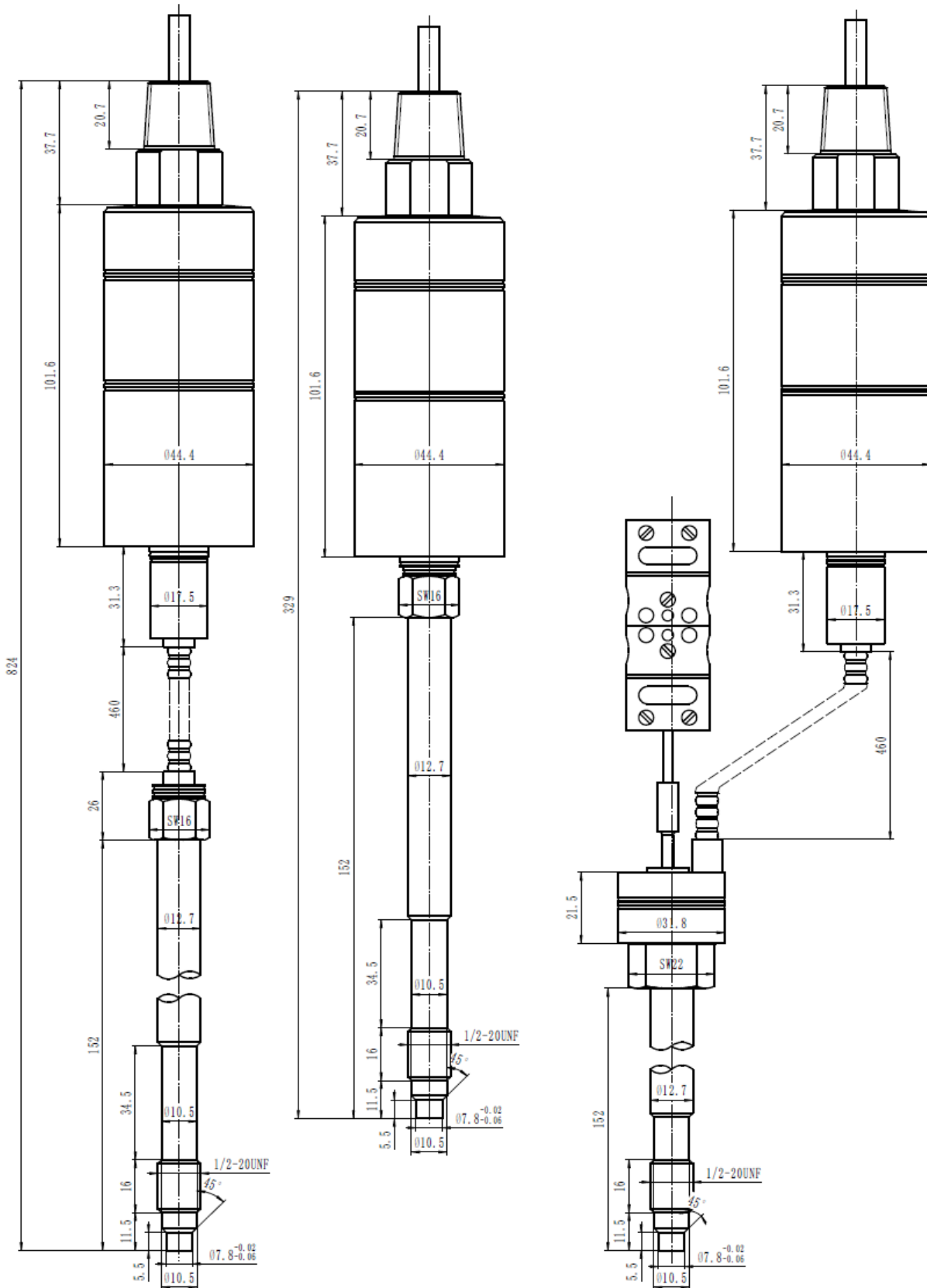
MPS Series is widely used in polymer industry requiring easy installation, good repeatability. It's various signal outputs such as mV/V, 0-5V, 0-10V or 4-20 mA are able to be connected with many pressure display. This series can also be quipped with temperature measurement component like E,J,K thermocouple. MPS series transducer adopts standart 1/2"-20 UNF thread. The MPS series product technology is widely accepted by peers all over the world.

Applications

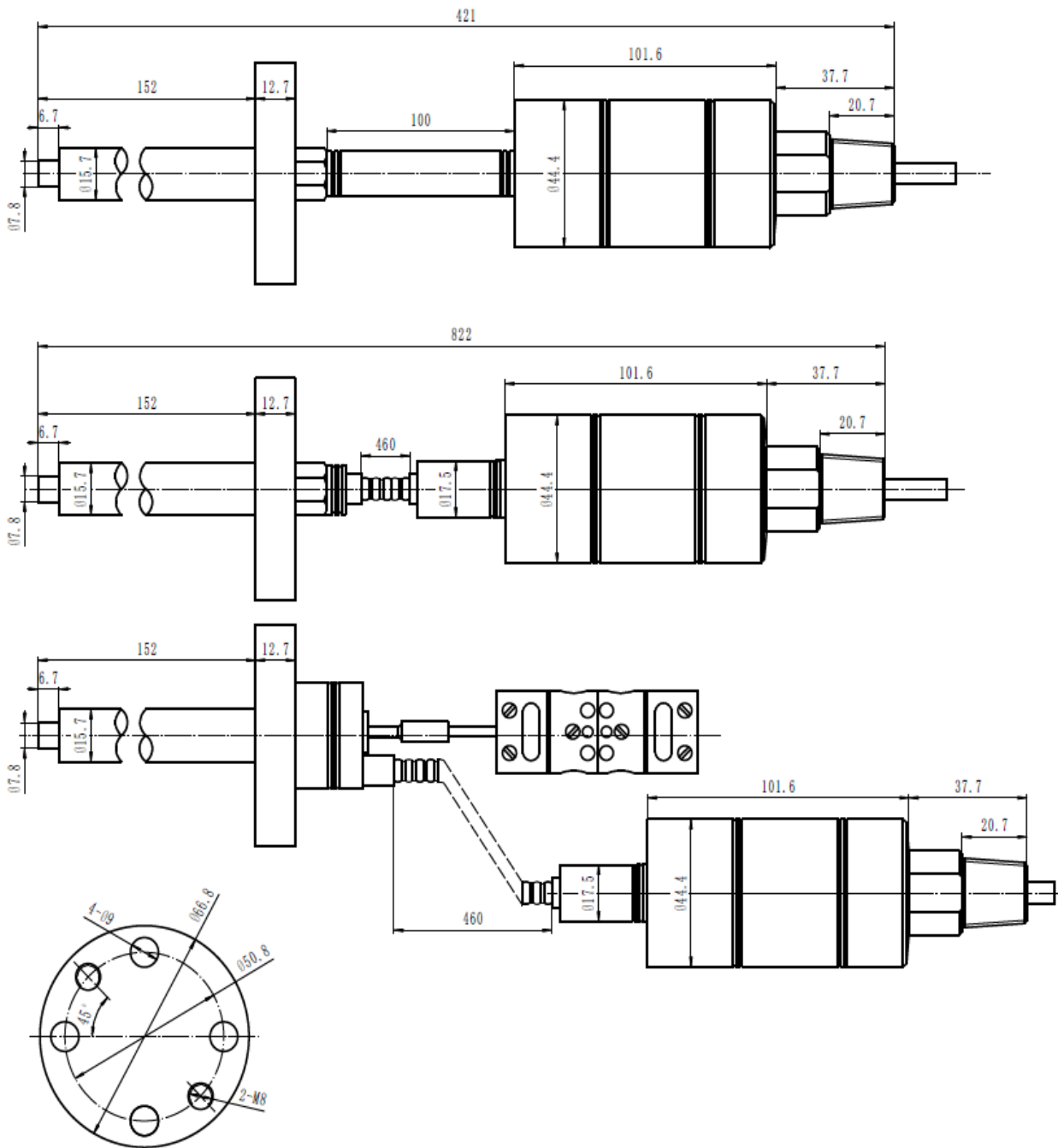
Extruder Industry
Injection Industry

TECHNICAL PARAMETERS		MECHANICAL AND SEALING CHARACTERISTICS	
Power Supply	mV/V: 10 V DC(recommended), mA or V : 24V DC	Transducer Technology	Bonded Wheatstone and Wheatstone bridge
Signal Output	3.33mV/V, 0-5V, 0-10V or 4-20mA	Diaphragm Temperature	750° F(400°C), at most
Accuracy	±0.25% FS, ±0.5% FS, ±1% FS	Diaphragm Materials	5 Different Diaphragm Options
Repeatability	±0.2% FS	Progress Connection	1/2 – 20 UNF and M14 × 1.5, M16 × 1.5, M18 × 1.5 Thread
Working Temperature	mV/V, mA: 185° F (85°c)	E – connection	5 PIN,6 PIN,7 PIN,8 PIN
Overload Ability	2x FS	Install Torque	500 in/lbs , at most
Pressure Range (bar)	0-35 Bar--2000Bar	Temperature Transducer (optional)	E/J/K/PT100 Type Thermocouple Matches With 3" Flexible Conduit
Pressure Unit	psi, Bar, kPa or MPa	Certification	Patented
Zero Adjustment (±% FS)	mV/V: No, mA: ± 20%	Certification	CE Certified
Zero Balance Design (±% FS)	mV/V: ± 10%: mA: ± 0.5%	Recommend Fitting	
Zero Drift (caused by progress temperature change)	1.5bar/100° F(3bar/100°)	Install Tools	Component GJ
Bridge Resistance	mV/V: 345 Ω, at least	6 Pin E – connection	Component CON06
Overload Resistance	mA: 1100 Ω, at most	Matching Connection	
Insulation Resistance	mV/V: 1000MΩ @50 Vdc mA: 100M Ω @50 Vdc	Fix Frame (electric device)	Spares No.:ZJ, cable Fitting, indicator
Shunt Calibration (R-Cal)	80% FS ± 1% FS		

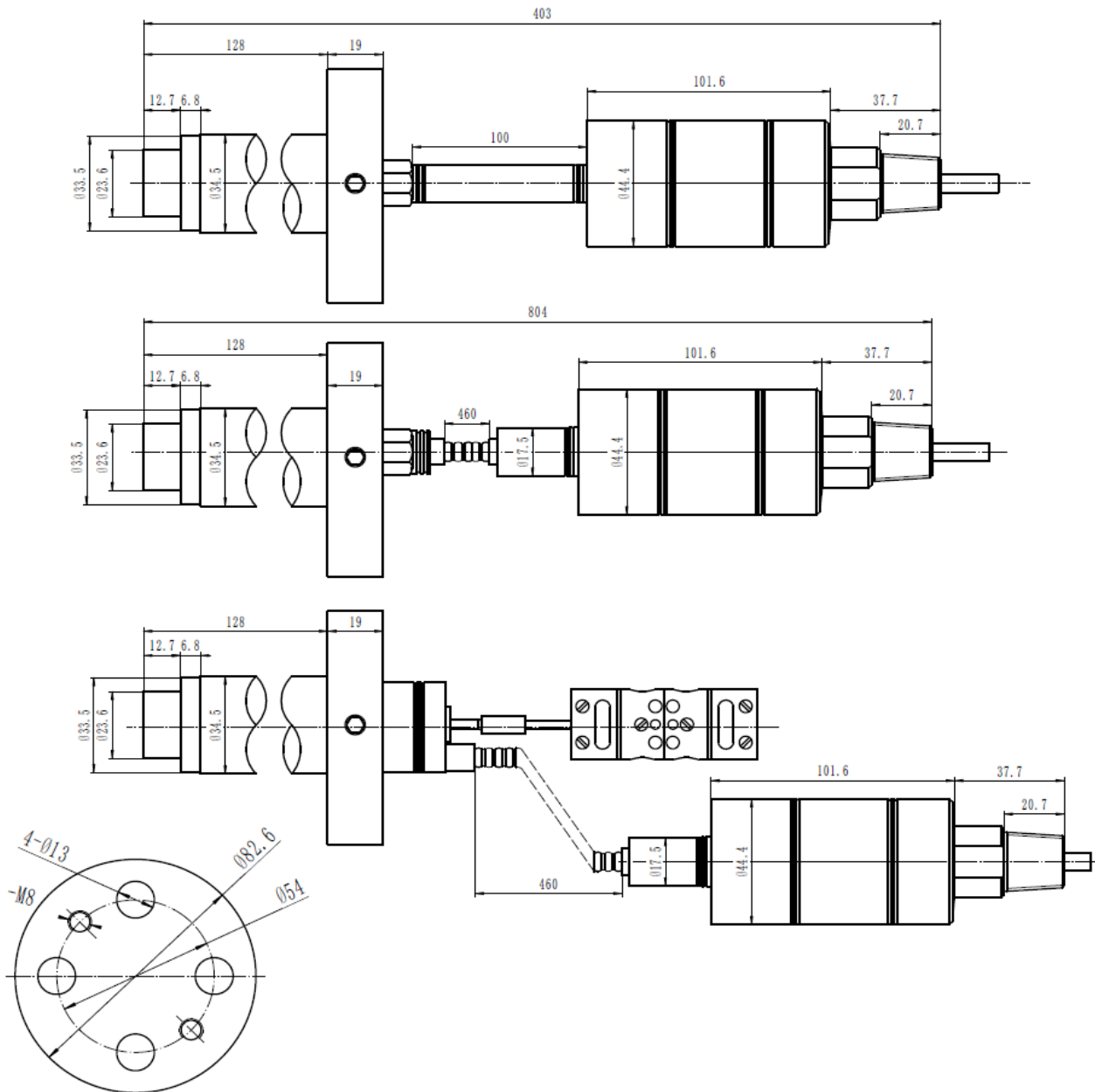
Dimension



Dimension




Dimension



E-Connection

Lead-Wire	2-Wire	Cable Colour
	E+	Red
	E-	Black
	GND	Green

6-PIN Connector	Current Output Signal(4-20mA)					
	A	B	C	D	E	F
	E+	E-			CAL	CAL
	Red	Black			Blue	Orange

Note:E refers to power supply;GND refers to ground wire

