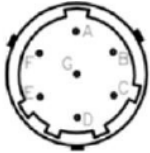


PT70x Series



Characteristic

- Strong Body Structure Against High Temperature
- Different Signal Output Options: mA, or V or mV / V
- More Durable with INCONEL 718 Alloy Membrane
- High Stability
- Accurate measurement
- Long life
- Resistant to Parasites
- 80% Internal calibration
- Good stability and repeatability
- Different Thermocouple Options: J Type, K Type, E Type, PT100

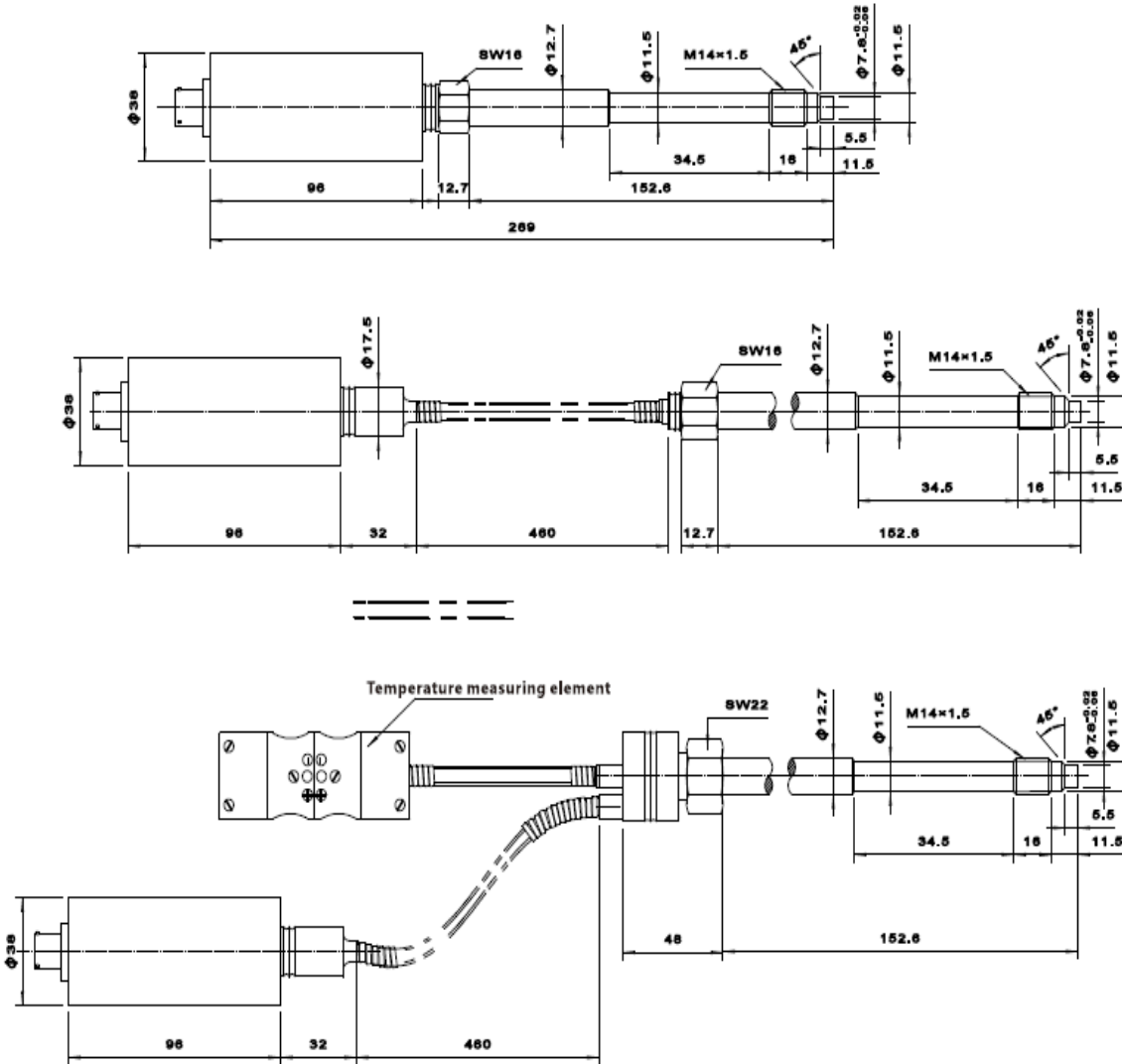


7 PIN
Relay Output
Series

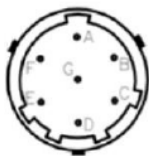
MPS Series is widely used in polymer industry requiring easy installation, good repeatability. It's various signal outputs such as mV/V, 0-5V, 0-10V or 4-20 mA are able to be connected with many pressure display. This series can also be quipped with temperature measurement component like E,J,K thermocouple. MPS series transducer adopts standart 1/2"-20 UNF thread. The MPS series product technology is widely accepted by peers all over the world.

TECHNICAL PARAMETERS		MECHANICAL AND SEALING CHARACTERISTICS	
Power Supply	mV/V: 10 V DC(recommended), mA or V : 24V DC	Transducer Technology	Bonded Wheatstone and Wheatstone bridge
Signal Output	3.33mV/V, 0-5V, 0-10V or 4-20mA	Diaphragm Temperature	750° F(400°C), at most
Accuracy	±0.25% FS, ±0.5% FS, ±1% FS	Diaphragm Materials	5 Different Diaphragm Options
Repeatability	±0.2% FS	Progress Connection	1/2 – 20 UNF and M14 × 1.5, M16 × 1.5, M18 × 1.5 Thread
Working Temperature	mV/V, mA: 185° F (85°c)	E – connection	5 PIN,6 PIN,7 PIN,8 PIN
Overload Ability	2x FS	Install Torque	500 in/lbs , at most
Pressure Range (bar)	0-35 Bar--2000Bar	Temperature Transducer (optional)	E/J/K/PT100 Type Thermocouple Matches With 3" Flexible Conduit
Pressure Unit	psi, Bar, kPa or MPa	Certification	Patented
Zero Adjustment (±% FS)	mV/V: No, mA: ± 20%	Certification	CE Certified
Zero Balance Design (±% FS)	mV/V: ± 10%: mA: ± 0.5%	Recommend Fitting	
Zero Drift (caused by progress temperature change)	1.5bar/100° F(3bar/100°)	Install Tools	Component GJ
Bridge Resistance	mV/V: 345 Ω, at least	6 Pin E – connection	Component CON06
Overload Resistance	mA: 1100 Ω, at most	Matching Connection	
Insulation Resistance	mV/V: 1000MΩ @50 Vdc mA: 100M Ω @50 Vdc	Fix Frame (electric device)	Spares No.:ZJ, cable Fitting, indicator
Shunt Calibration (R-Cal)	80% FS ± 1% FS		

External Dimension



E - Connection



Code : S3		
7 - PIN	PIN	Wire Color
F	E+	Yellow
C	S+	White
B	E-	Black
D - G	Output	Green - Gray
A - E	Output	Red - Blue

Code : S4		
7 - PIN	PIN	Wire Color
F	E+	Red
C	S+	Black
B	E-	White
D - G	Output	Green
A - E	Output	Blue - Yellow

Code : S4		
7 - PIN	PIN	Wire Color
A	E+	Red
B	S+	Black
C	E-	White
D	S-	Green
E - F	Output	Blue - Yellow
G	Output	Gray

