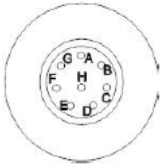


PT80x Series



## Characteristic

- Strong Body Structure Against High Temperature
- Different Signal Output Options: mA, or V or mV / V
- More Durable with INCONEL 718 Alloy Membrane
- High Stability
- Accurate measurement
- Long life
- Resistant to Parasites
- 80% Internal calibration
- Good stability and repeatability
- Different Thermocouple Options: J Type, K Type, E Type, PT100

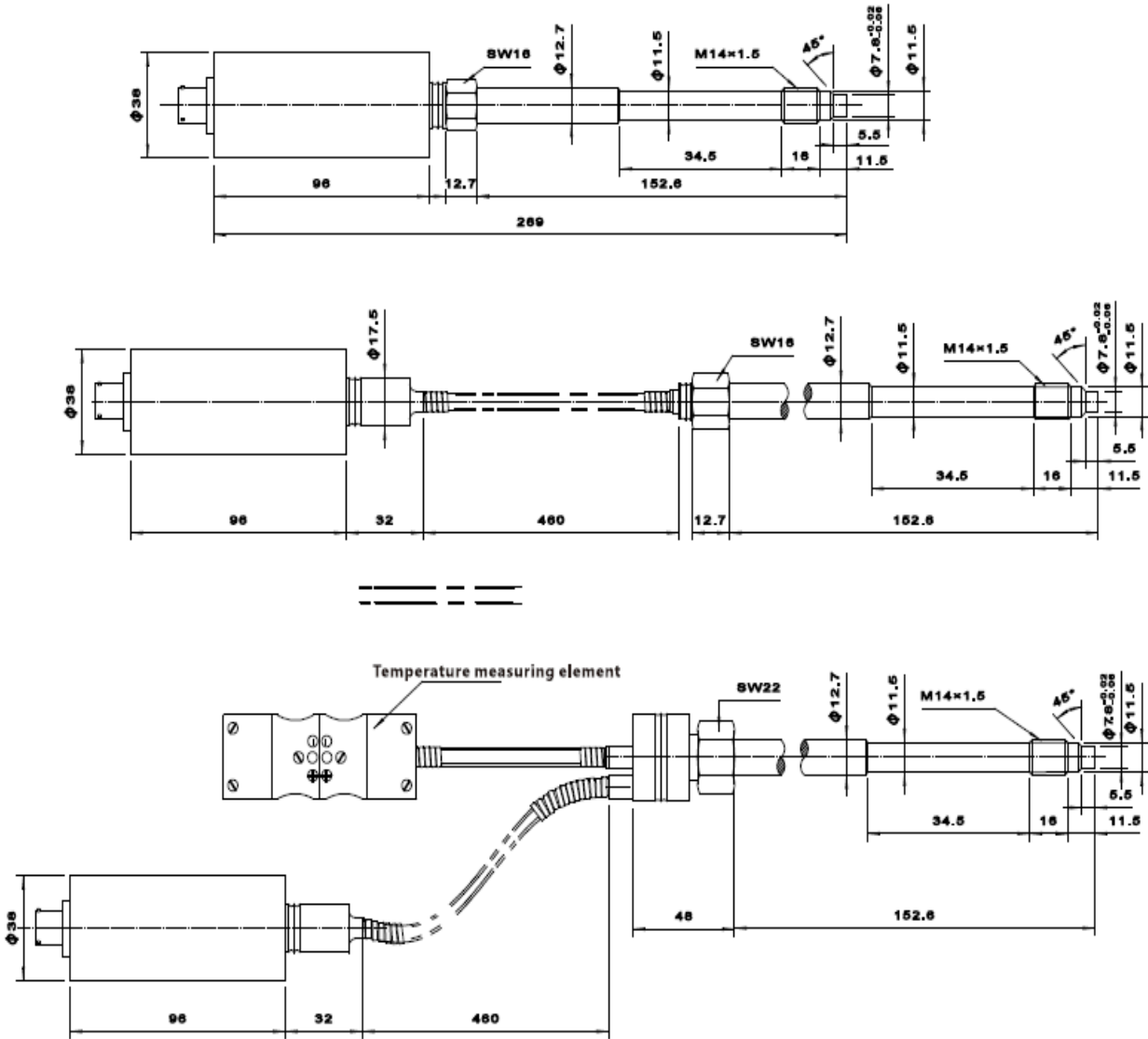


8 PIN Series

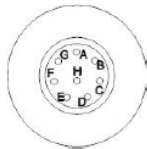
MPS Series is widely used in polymer industry requiring easy installation, good repeatability. It's various signal outputs such as mV/V, 0-5V, 0-10V or 4-20 mA are able to be connected with many pressure display. This series can also be quipped with temperature measurement component like E,J,K thermocouple. MPS series transducer adopts standart 1/2"-20 UNF thread. The MPS series product technology is widely accepted by peers all over the world.

TECHNICAL PARAMETERS		MECHANICAL AND SEALING CHARACTERISTICS	
<b>Power Supply</b>	mV/V: 10 V DC(recommended), mA or V : 24V DC	<b>Transducer Technology</b>	Bonded Wheatstone and Wheatstone bridge
<b>Signal Output</b>	3.33mV/V, 0-5V, 0-10V or 4-20mA	<b>Diaphragm Temperature</b>	750° F(400°C), at most
<b>Accuracy</b>	±0.25% FS, ±0.5% FS, ±1% FS	<b>Diaphragm Materials</b>	5 Different Diaphragm Options
<b>Repeatability</b>	±0.2% FS	<b>Progress Connection</b>	1/2 – 20 UNF and M14 × 1.5, M16 × 1.5, M18 × 1.5 Thread
<b>Working Temperature</b>	mV/V, mA: 185° F (85°c)	<b>E – connection</b>	5 PIN,6 PIN,7 PIN,8 PIN
<b>Overload Ability</b>	2x FS	<b>Install Torque</b>	500 in/lbs , at most
<b>Pressure Range (bar)</b>	0-35 Bar---2000Bar	<b>Temperature Transducer (optional)</b>	E/J/K/PT100 Type Thermocouple Matches With 3" Flexible Conduit
<b>Pressure Unit</b>	psi, Bar, kPa or MPa	<b>Certification</b>	Patented
<b>Zero Adjustment (±% FS)</b>	mV/V: No, mA: ± 20%	<b>Certification</b>	CE Certified
<b>Zero Balance Design (±% FS)</b>	mV/V: ± 10%: mA: ± 0.5%	<b>Recommend Fitting</b>	
<b>Zero Drift (caused by progress temperature change)</b>	1.5bar/100° F(3bar/100°)	<b>Install Tools</b>	Component GJ
<b>Bridge Resistance</b>	mV/V: 345 Ω, at least	<b>6 Pin E – connection</b>	Component CON06
<b>Overload Resistance</b>	mA: 1100 Ω, at most	<b>Matching Connection</b>	
<b>Insulation Resistance</b>	mV/V: 1000MΩ @50 Vdc mA: 100M Ω @50 Vdc	<b>Fix Frame (electric device)</b>	Spares No.:ZJ, cable Fitting, indicator
<b>Shunt Calibration (R-Cal)</b>	80% FS ± 1% FS		

## External Dimension



## E - Connection



Code : S6		
8 - PIN	PIN	Wire Color
A	E+	Red
B	S+	Black
C	E+	White
D	Output	Green
E - F	Output	Blue - Yellow
G - H	Output	Gray - Brown

Code : S7		
8 - PIN	PIN	Wire Color
A	E+	Red
B	S+	Black
C	E-	White
D	Output	Green
E - F	Output	Blue - Yellow
G - H	Output	Gray - Brown

Code : S8		
8 - PIN	PIN	Wire Color
A	E+	Red
B		
C	E-	White
D	S+	Green
E - F	Output	Blue - Yellow
G - H	Output	Gray - Brown

## Ordering Code

Series Code		PT80																				
Version	Rigid Stem		0																			
	Rigid Stem + Flexible		1																			
	With Thermocouple		2																			
Accuracy	0,25% FSO				A																	
	0,5% FSO				B																	
	1% FSO				C																	
Measurement Range	35bar 500psi																				5C	
	50bar 750psi																					7.5C
	70bar 1000psi																					1M
	100bar 1500psi																					1.5 M
	200bar 3000psi																					3M
	350bar 5000psi																					5M
	400bar 5800psi																					5.8M
	500bar 7500psi																					7.5M
	600bar 8700psi																					8.7M
	700bar 10000psi																					10M
	1000bar 15000psi																					15M
	1400bar 20000psi																					20M
2000bar 30000psi																					30M	
Thread	1/2-20UNF (Standard)																					1/2"
	M14x1.5																					M14
	M16x1.5																					M16
	M18x1.5																					M18
Rigid Stem Length (mm/inches)	38mm 1.5"																					1.5"
	50mm 2"																					2"
	76mm 3"																					3"
	153mm 6"																					6"
	318mm 12.5"																					12.5"
	350mm 14"																					14"
	400mm 16"																					16"
	456mm 18"																					18"
Flexible Stem Length (mm/inches)	76mm 3"																					3"
	152mm 6"																					6"
	300mm 12"																					12"
	457mm 18" (Standard)																					18"
	610mm 24"																					24"
	711mm 28"																					28"
	760mm 30"																					30"
	914mm 36"																					36"
	1067mm 42"																					42"
	1220mm 48"																					48"
1372mm 54"																					54"	
Signal Output	mV/V																					mV
	mA																					mA
	V																					V
Thermocouple Type	None Thermocouple																					-
	J Type																					J
	K Type																					K
	None Thermocouple																					E
	PT100 Type																					PT100
Diaphragm Type	Standart (17-4PH)																					-
	Hastelloy																					C2
	Inconel 718																					I7
	TIN																					T2
	DCN																					D2